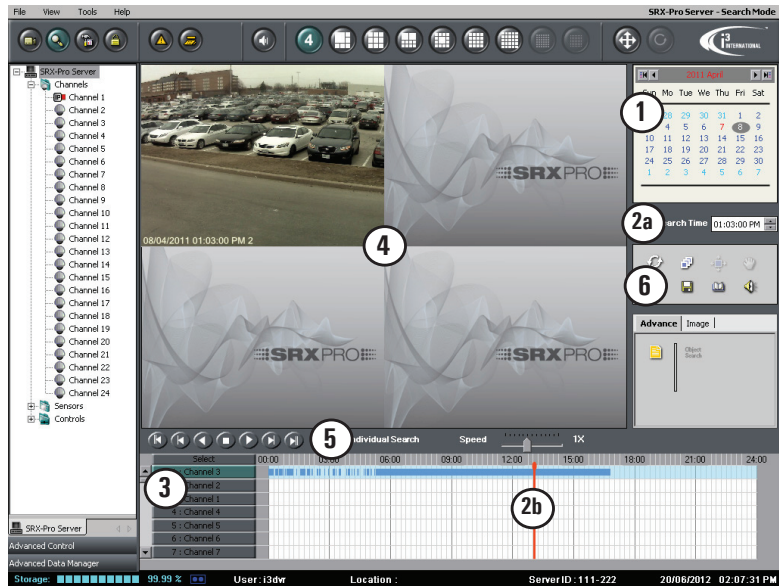


SRX PRO SNAPSHOT BACKUP

Follow the instructions below to save a Snapshot to USB storage device:

1. Connect your **USB drive** to the USB port on the DVR/NVR.
2. Click the **Search** button on the Main Screen to access Search Mode. The Search window will appear.

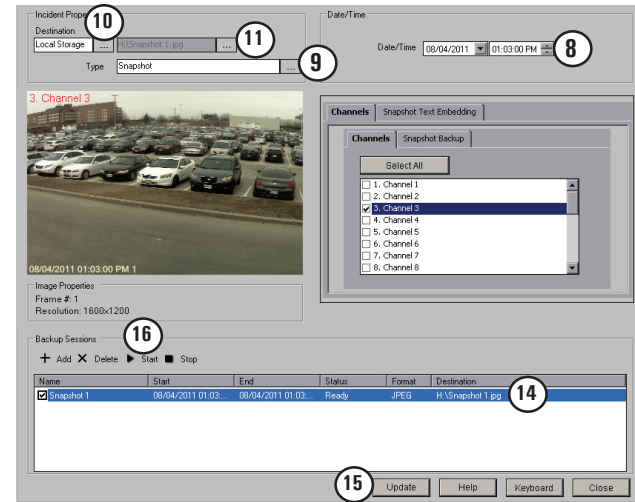


NOTE: The timeline (2b) provides a visual representation of the recorded data for a 24-hour period. The recorded data is represented by multi-colored bars. The color of the bar indicates the type of the video recording: continuous (pink), sensor (orange), motion (blue), sensor+motion (green) or lime (VideoLogix).

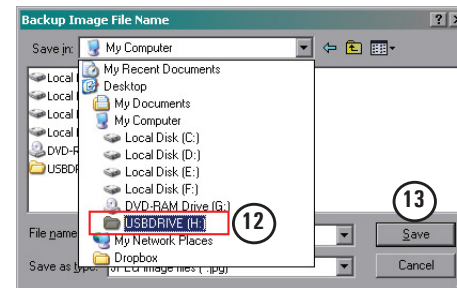
3. In the Calendar window, select the desired year and month. (1)
4. Select the day of the recording in the Calendar window (use mouse cursor). (1)
5. Set the Search Time of the recording in the Search Time (use keyboard or mouse cursor) (2a) or click directly on the timeline to set the desired time. (2b)
6. Click the channel selection button to select the desired video channel. By default, all channels are selected. Double-click the "Select" button to deselect all channels (3) Then click on individual channel button to select the desired channel
Note: Scroll down to see channels 8-XX.
7. Double-click on the selected channel image in the View Screen to bring it forward. (4)
8. If required, use the Playback Control panel to find the desired video frame. (5) Click **Stop** button on the Playback Control panel to stop the playback at the desired frame. (5)

9. Click **Backup** button in the Tools panel to start saving the snapshot to the USB drive. (6)

The Snapshot Backup window will be displayed. The selected snapshot is displayed in the view screen. (7) If this is not the snapshot you need to save, adjust the time and date (8) or return to Step 3.



10. Make sure that the **Type** is set to **Snapshot**. (9)
11. Click the **Browse** button in the **Destination** field and select **Local Storage** (10)
12. Click the **Browse** button next to the destination path. (11) Backup Image File Name window will be displayed.
13. Select **USB storage drive** in the **Save in:** drop-down list. In this example, USB drive is a (H:) drive. (12)
14. In the **File name:** field, type the Snapshot name and click **Save**. (13)
15. Click on the Snapshot backup line (14) and click **Update** (15) This step must be completed to update the snapshot's backup name and destination.
16. Repeat Steps 3-15 until all desired snapshots have been added to the Backup Sessions window.
17. Click **Start** to begin Snapshot backup process. (16)
18. Wait until the status of each Snapshot Backup session has changed from "Ready" to "Finished" (see image)



17. Click **Start** to begin Snapshot backup process. (16)
18. Wait until the status of each Snapshot Backup session has changed from "Ready" to "Finished" (see image)

| Name | Start | End | Status | Format | Destination |
|------------|----------------------|----------------------|----------|--------|-------------------|
| Snapshot 1 | 08/04/2011 01:03:... | 08/04/2011 01:03:... | Finished | JPEG | H:\Snapshot 1.jpg |

19. Safely remove the USB drive from the USB port.